

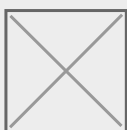


## Acessórios de pressão PVC-U

# Machón mixto

## ITEM 020

REFERÊNCIA	DESCRIÇÃO	Peso líquido	Volume (m <sup>3</sup> )	contenido.peso bruto	Unidades por lote
1002037	Niple MIXTO 16-20-1/2"	0.01	0.00472	1.51	150
1002728	Niple MIXTO 25-32-1/2"	0.0241	0.008918	2.595	100
1002729	Niple MIXTO 25-32-1"	0.030226	0.008918	3.21	100
1002731	Niple MIXTO 32-40-3/4"	0.0386	0.008918	3.275	80
1002732	Niple MIXTO 32-40-1"	0.041604	0.015532	3.655	80
1002733	Niple MIXTO 32-40-1 1/4"	0.046541	0.015532	4.05	80
1002741	Niple MIXTO 40-50-1"	0.073976	0.015532	5.505	70
1002742	Niple MIXTO 40-50-1 1/4"	0.08	0.022435	6.0877	70
1002743	Niple MIXTO 40-50-1 1/2"	0.078676	0.022435	5.995	70
1002751	Niple MIXTO 50-63-1"	0.121222	0.022435	7.761	60
1002752	Niple MIXTO 50-63-1 1/4"	0.120872	0.022435	7.74	60
1002753	Niple MIXTO 50-63-1 1/2"	0.123538	0.03129	7.9	60
1002754	Niple MIXTO 50-63-2"	0.128783	0.031294	8.3	60
1002761	Niple MIXTO 63-75-1"	0.167813	0.047171	15.745	90
1002762	Niple MIXTO 63-75-1 1/4"	0.17	0.063473	16.09	90
1002763	Niple MIXTO 63-75-1 1/2"	0.17	0.063473	16.0869	90
1002764	Niple MIXTO 63-75-2"	0.177479	0.063473	16.76	90
1002765	Niple MIXTO 63-75-2 1/2"	0.20099	0.063473	18.876	90
1002766	Niple MIXTO 75-90-2 1/2"	0.297738	0.047171	14.04	45
1002767	Niple MIXTO 90-110-3"	0.511248	0.047171	13.423	25
1002768	Niple MIXTO 110-125-3"	0.584	0.032643	9.985	16
1002769	Niple MIXTO 75-90-2"	0.281404	0.047171	13.305	45
1002770	Niple MIXTO 75-90-3"	0.31696	0.047171	14.905	45



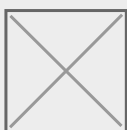


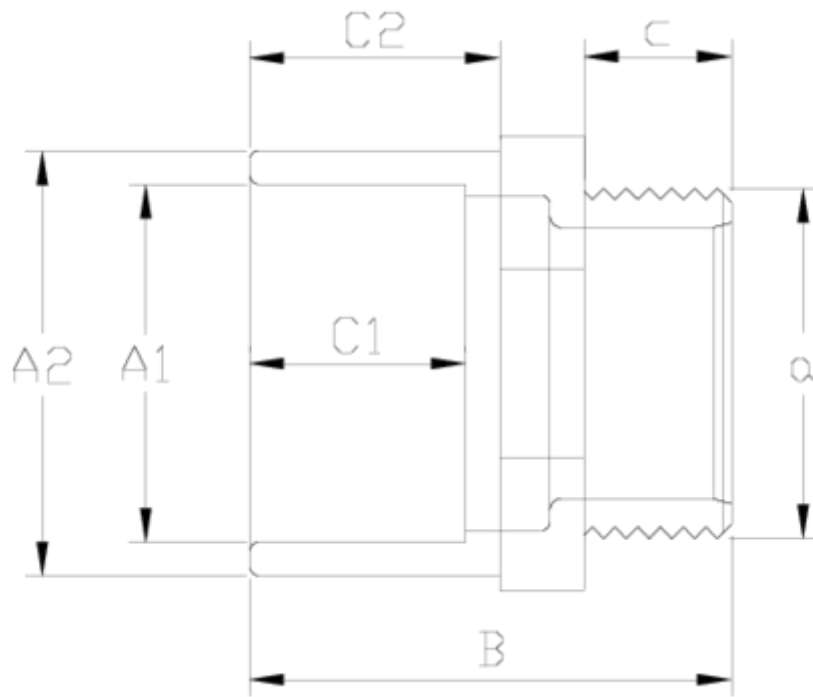
## Acessórios de pressão PVC-U

# Machón mixto

## ITEM 020

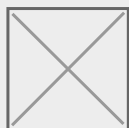
REFERÊNCIA	DESCRIÇÃO	Peso líquido	Volume (m <sup>3</sup> )	Peso bruto	Unidades por lote
1002771	Niple MIXTO 90-110-2 1/2"	0.506552	0.03682	13.213	25
1002800	Niple MIXTO 90-110-4"	0.594	0.06347	15.68	25





## ITEM 020 | Machón mixto

Código	A1-A2 x a	Peso (g)	B	C1	C2	c	PN	ROSCA
02000	16-20x3/8"	7	35	15	16	12	PN10	BSP
02037	16-20x1/2"	8	37	15	16	14	PN10	BSP
02001	20-25x1/2"	14	38	16	19	14	PN10	BSP
02728	25-32x1/2"	24	48	19	22	14	PN10	BSP
02002	25-32x3/4"	26	51	19	22	17	PN10	BSP
02729	25-32x1"	29	53	19	22	19	PN10	BSP
02731	32-40x3/4"	38	54	22	26	16	PN10	BSP
02732	32-40x1"	41	57	22	26	19	PN10	BSP
02733	32-40x1 1/4"	45	59	22	26	22	PN10	BSP
02741	40-50x1"	72	64	26	31	19	PN10	BSP





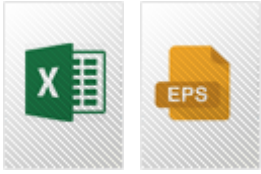
## ITEM 020 | Machón mixto

02742	40-50x1 1/4"	75	65	26	31	22	PN10	BSP
02743	40-50x1 1/2"	79	66	26	31	22	PN10	BSP
02751	50-63x1"	114	71	31	38	19	PN10	BSP
02752	50-63x1 1/4"	118	74	31	38	22	PN10	BSP
02753	50-63x1 1/2"	121	74	31	38	22	PN10	BSP
02754	50-63x2"	128	78	31	38	26	PN10	BSP
02761	63-75x1"	164	79	38	44	19	PN10	BSP
02762	63-75x1 1/4"	16	81	38	44	22	PN10	BSP
02763	63-75x1 1/2"	172	81	38	44	22	PN10	BSP
02764	63-75x2"	173	85	38	44	26	PN10	BSP
02765	63-75x2 1/2"	200	89	38	44	31	PN10	BSP
02769	75-90x2"	275	93	44	51	26	PN10	BSP
02766	75-90x2 1/2"	294	98	44	51	31	PN10	BSP
02770	75-90x3"	345	100	44	51	33	PN10	BSP
02771	90-110x2 1/2"	490	109	51	61	31	PN10	BSP
02767	90-110x3"	493	111	51	61	33	PN10	BSP
02800	90-110x4"	525	118	51	61	40	PN10	BSP
02768	110-125x3"	508	120	61	69	33	PN10	BSP
02009	110-125x4"	532	127	61	69	40	PN10	BSP

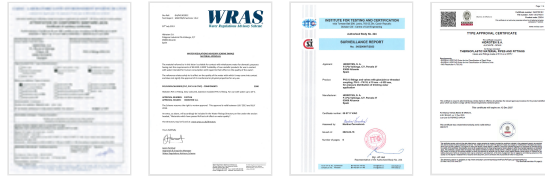




## Documentación del Producto



## Certificados del Producto



## Certificados de la Empresa

