

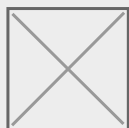


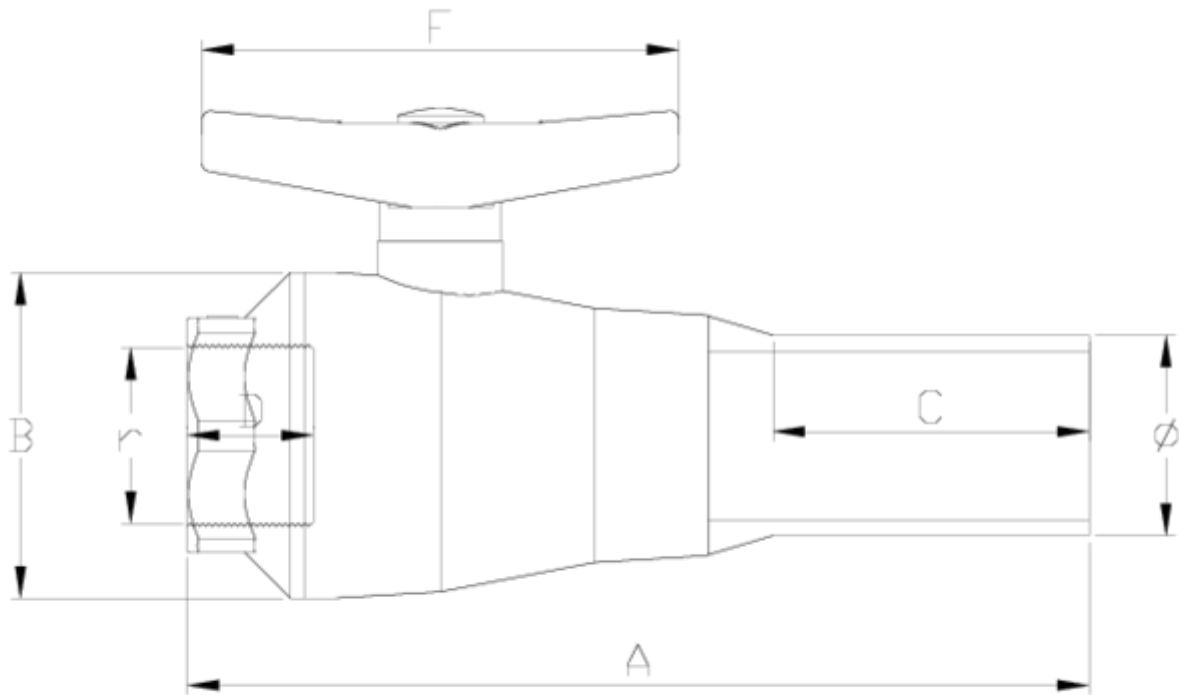
## Válvulas de esfera "Compact"

# Salida R/ H - PE FPM

### ITEM 722

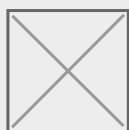
REFERÊNCIA	DESCRIÇÃO	Peso líquido	Volume (m <sup>3</sup> )	contenido.peso bruto	Unidades por lote
111C140	VALVULA COMPACT R/H-PE 20-1/2" FPM	0.122	0.008918	2.52	20
111C141	VALVULA COMPACT R/H-PE 25-3/4" FPM	0.149	0.008918	3.12	20
111C142	VALVULA COMPACT R/H-PE 32-1" FPM	0.25	0.015532	3.885	15
111C143	VALVULA COMPACT R/H-PE 40-1 1/4" FPM	0.381	0.022435	6.78	15
111C144	VALVULA COMPACT R/H-PE 50-1 1/2" FPM	0.566	0.022435	6.82	10
111C145	VALVULA COMPACT R/H-PE 63-2" FPM	1.016	0.015532	5.26	5





## ITEM 722 | Salida R/ H - PE FPM

CÓDIGO	d-r	DN	PESO (g)	A	B	C	D	F	PN	TIPO ROSCA
11C140	20-1/2"	15	118.58	152	48	65	17	80	PN16	BSP
11C141	25-3/4"	20	149.38	159	53	65	20	80	PN16	BSP
11C142	32-1"	25	242.55	176	59	70	23	101	PN16	BSP
11C143	40-1 1/4"	32	415.8	192	69	70	26	130	PN16	BSP
11C144	50-1 1/2"	40	628.32	225	83	79	33	130	PN16	BSP
11C145	63-2"	50	1004.08	256	104	89	39	172	PN16	BSP





## Documentação do Produto



## Certificados do Produto

## Certificados da Empresa

